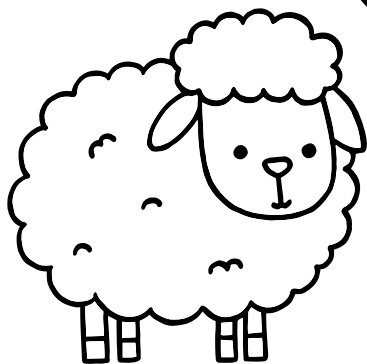


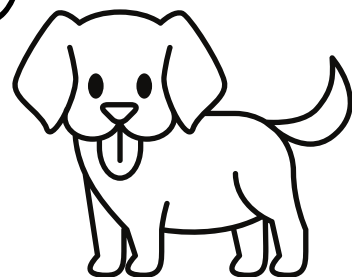
nóng chǎng dòng wù de shēng yīn
農場動物的聲音

FARM ANIMAL
SOUNDS



miē
咩
BAA

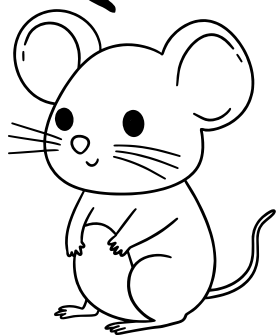
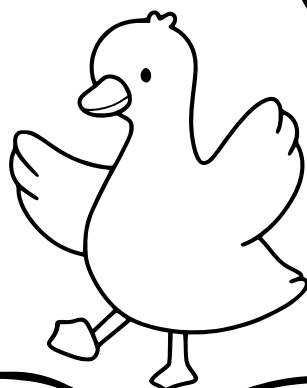
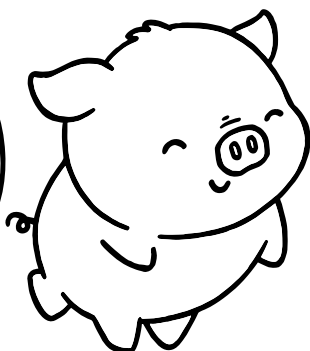
wāng wāng
汪汪
WOOF



hēng hēng
哼哼
OINK

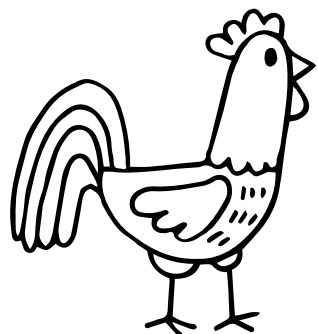
sī
嘶
NEIGH

zhī zhī zhī zhī
吱吱吱吱
SQUEAK



guā guā
呱呱
QUACK

mōu
哞
MOO



ō ō ō
喔喔喔
**COCK-A
DOODLE-DOO**

